



HR ESTATE AGENTS

3 Bedrooms

House - Mid Terrace

Price Guide

£280,000

Located in

Coventry





Ravensdale Road

Coventry | CV2 5GQ



Introducing this three-bedroom terraced property, perfectly positioned in a sought-after area that combines convenience with a real sense of community.

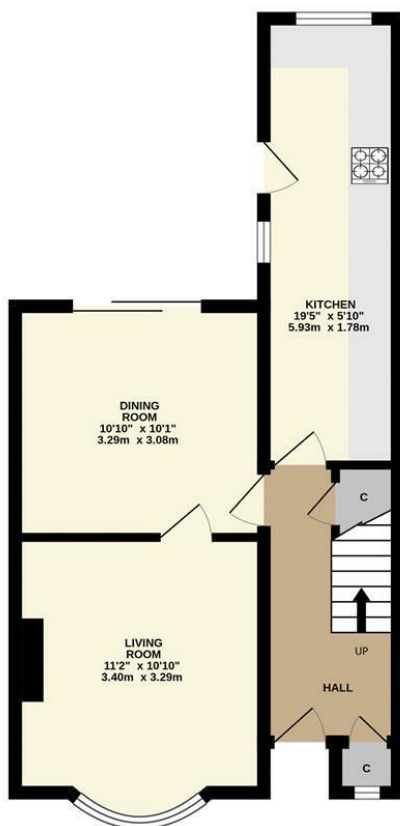
Ravensdale Road

£280,000 Freehold

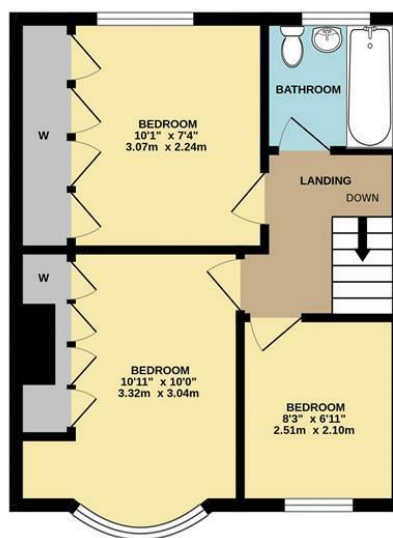


- Terraced Property
- Three Bedrooms
- Catchment Area For Well Regarded Schools
- Bus Route Into Coventry City Centre/Coventry Train Station
- Green Spaces And Parks Nearby
- Driveway
- Modern Kitchen With Built In Appliances
- Walking Distance To University Hospital Coventry
- Easy Access To Motorway Links

GROUND FLOOR
422 sq.ft. (39.2 sq.m.) approx.



1ST FLOOR
353 sq.ft. (32.8 sq.m.) approx.



TOTAL FLOOR AREA: 775 sq.ft. (72.0 sq.m.) approx.

Whilst every attempt has been made to ensure the accuracy of the floorplan contained here, measurements of doors, windows, rooms and any other items are approximate and no responsibility is taken for any error, omission or mis-statement. This plan is for illustrative purposes only and should be used as such by any prospective purchaser. The services, systems and appliances shown have not been tested and no guarantee as to their operability or efficiency can be given.
Made with Metropix ©2025

Council Tax Band B

Local Authority

Agents Note: Whilst every care has been taken to prepare these particulars, they are for guidance purposes only. All measurements are approximate and are for general guidance purposes only and whilst every care has been taken to ensure their accuracy, they should not be relied upon and potential buyers/tenants are advised to recheck the measurements.

Energy Efficiency Rating		
	Current	Potential
Very energy efficient - lower running costs		
(92 plus) A		
(81-91) B		
(69-80) C		
(55-68) D		
(39-54) E		
(21-38) F		
(1-20) G		
Not energy efficient - higher running costs		
England & Wales	EU Directive 2002/91/EC	

Number Three Siskin Drive
Coventry
CV3 4FJ

HR ESTATE AGENTS